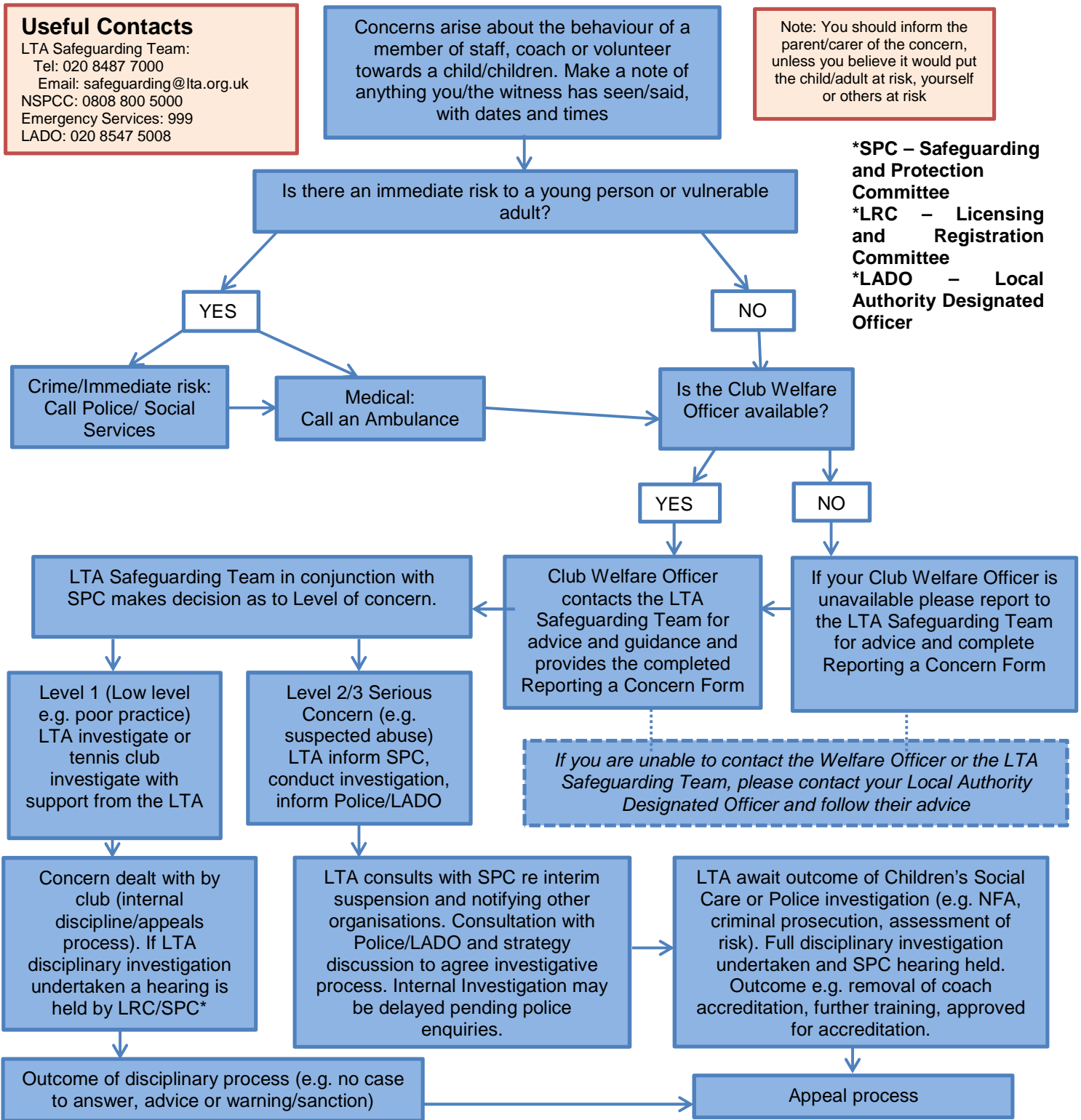




# SAFEGUARDING POLICY

## Reporting a Safeguarding Concern within the Tennis Environment





# SAFEGUARDING POLICY

## 1. Policy statement

Coombe Wood LTC is committed to prioritising the well-being of all children and adults at risk, promoting safeguarding in our club at all times, including all programmes and events we run. This Policy strives to minimise risk, deliver a positive tennis experience for everyone and respond appropriately to all safeguarding concerns/disclosures.

## 2. Use of terminology

**Child:** a person under the age of eighteen years.

**Adult at risk of abuse or neglect:** a person aged eighteen years or over who is, or may be, in need of community care services by reason of disability, age or illness; and is, or may be, unable to take care of, or unable to protect him or herself against abuse or neglect.

**Safeguarding children:** protecting children from abuse and neglect, preventing the impairment of children's health or development, ensuring that they grow up in circumstances consistent with the provision of safe and effective care, and taking action to enable all children to have the best life chances.

**Safeguarding adults at risk:** protecting adults from abuse and/or neglect. Enabling adults to maintain control over their lives and make informed choices without coercion. Empowering adults at risk, consulting them before taking action, unless someone lacks the capacity to make a decision, or their mental health poses a risk to their own or someone else's safety, in which case, always acting in his or her best interests.

*(See appendix A for full glossary of terms).*

## 3. Scope

This Policy is applicable to all at Coombe Wood LTC - members, staff, coaches, officials, volunteers, parents or carers, contractors and visitors. It is in line with national legislation and applicable across the UK.

Advice, guidance and support is available from the LTA Safeguarding Team.



# SAFEGUARDING POLICY

## 4. Responsibility for the implementation of the Safeguarding Policy, Standards, Code of Conduct and Reporting Procedure

### SAFEGUARDING IS EVERYONE'S RESPONSIBILITY: NOT RESPONDING TO A SAFEGUARDING CONCERN IS NOT AN OPTION.

- Our club's committee has overall accountability for this Policy and its implementation
- Our club Welfare Officer is responsible for updating this Policy in line with legislative and club developments; their name and contact details are given in appendix D and are clearly displayed at the club
- All individuals involved in/present at the club are required to adhere to the Policy and Code of Conduct
- The LTA Safeguarding Team and Tennis Scotland, Tennis Wales and Tennis Foundation Safeguarding Leads can offer support to help clubs proactively safeguard

### Where there is a safeguarding concern/disclosure:

- The individual who is told about, hears, or is made aware of the concerns/disclosure is responsible for following the Reporting a Safeguarding Concern Procedure. Unless someone is in immediate danger, they should inform their club Welfare Officer, LTA Safeguarding Team or National Safeguarding Lead
- The club Welfare Officer is responsible for reporting safeguarding concerns to the LTA Safeguarding Team
- The LTA Safeguarding Team is responsible for assessing all safeguarding concerns/disclosures that are reported to them and working with the club Welfare Officer and national Safeguarding Leads to follow up as appropriate on a case-by-case basis, prioritising the well-being of the child/ adult at risk at all times. Dependent on the concern/disclosure, a referral may be made to:
  - The police in an emergency (999);
  - Achieving for Children telephone 020 8547 5008 8am - 6pm Monday to Friday. Out of hours social worker 020 8770 5000.
  - Kingston Council Adult Services Access and Safeguarding Team during office hours on 020 8547 5005. After 5pm please call 020 8770 5000.
  - Designated Officer (England only) for concerns/disclosures about a member of staff, consultant, coach, official or volunteer at LTA Safeguarding Team 020 8487 7000 [safeguarding@lta.org.uk](mailto:safeguarding@lta.org.uk) (Monday to Friday, 9am to 5pm)
  - Disclosure and Barring Service for concerns/disclosures about a member of staff, consultant, coach, official or volunteer [customerservices@dbs.qsi.gov.uk](mailto:customerservices@dbs.qsi.gov.uk) or call 03000 200 190

## 3. Breaches of the Safeguarding Policy, Standards, Code of Conduct and Reporting Procedure

Breaches of this Policy and/or failure to comply with the outlined responsibilities may result in the following:

- Disciplinary action leading to possible dismissal and legal action
- Termination of current and future roles within the club and roles in other clubs, the LTA, Tennis Wales, Tennis Scotland and the Tennis Foundation

Actions taken by staff, consultants, volunteers, officials, coaches inside or outside of the club that are seen to contradict this Policy may be considered a violation of this Policy. Where an appeal is lodged in response to a safeguarding decision made by the club, the individual should adhere to the club's appeal procedure.



# SAFEGUARDING POLICY

## Codes of Conduct

**All members, staff, coaches, officials, volunteers, parents or carers, contractors and visitors agree to:**

- Prioritise the well-being of all children and adults at all times
- Treat all children and adults at risk fairly and with respect
- Be a positive role model. Act with integrity, even when no one is looking
- Help to create a safe and inclusive environment both on and off court
- Not allow any rough or dangerous behaviour, bullying or the use of bad or inappropriate language
- Report all allegations of abuse or poor practise to the club Welfare Officer
- Not use any sanctions that humiliate or harm a child or adult at risk
- Value and celebrate diversity and make all reasonable efforts to meet individual needs
- Keep clear boundaries between your professional and personal life, including on social media
- Have the relevant consent from parents/carers, children and adults before taking or using photos and videos
- Refrain from smoking and consuming alcohol during club activities or coaching sessions (excluding social activities)
- Ensure roles and responsibilities are clearly outlined and everyone has the required information and training.
- Not abuse, neglect, harm or discriminate against anyone; or act in a way that may be interpreted as such
- Not have a relationship with anyone under 18 for whom they are coaching or responsible for
- Not to have a relationship with anyone over 18 whilst continuing to coach or be responsible for them.

## All Children agree to:

- Be friendly, supportive and welcoming to other children and adults
- Play fairly and honestly
- Respect club staff, volunteers and Officials and accept their decisions
- Behave, respect and listen to your coach
- Take care of your equipment and club property
- Respect the rights, dignity and worth of all participants regardless of age, gender, ability, race, culture, religion or sexual identity
- Not use bad, inappropriate or racist language on social media
- Not bully, intimidate or harass anyone, including on social media
- Not smoke, drink alcohol or have drugs of any kind on club premises or whilst representing the club at competitions or events
- Talk to the club Welfare Officer about any concerns or worries they have about themselves or others.



# SAFEGUARDING POLICY

## All parents and carers agree to:

- Encourage your child and show an interest in their tennis
- Use appropriate language at all times
- Be realistic and supportive
- Never ridicule or admonish a child for making a mistake or losing a match
- Treat all children, adults, volunteers, coaches, officials and members of staff with respect
- Behave responsibly at the venue; do not embarrass your child
- Accept the official's decisions and do not go on court or interfere with matches
- Encourage your child to play by the rules, and teach them that they can only do their best
- Deliver and collect your child punctually from the venue
- Ensure your child has appropriate clothing for the weather conditions
- Ensure that your child understands their code of conduct
- Adhere to your venue's safeguarding policy, diversity and inclusion policy, rules and regulations
- Provide emergency contact details and any relevant information about your child including medical history

This Policy will be reviewed every three years [or earlier if there is a change in national legislation].

This Policy was authorised by the Committee as certified by:

Club Committee Chair [*Heather McAtackney*]:

Date:

Club Welfare Officer [*Valerie Jermy*]:

Date:



# SAFEGUARDING POLICY

## Appendix A: Glossary of Terms

**Safeguarding:** protecting **children** from abuse and neglect, preventing the impairment of children's health or development, ensuring that children are growing up in circumstances consistent with the provision of safe and effective care, and taking action to enable all children to have the best life chances. Enabling **adults at risk** to achieve the outcomes that matter to them in their life; protecting their right to live in safety, free from abuse and neglect. Empowering and supporting them to make choices, stay safe and raise any concerns. Beginning with the assumption that an individual is best-placed to make decisions about their own wellbeing, taking proportional action on their behalf only if someone lacks the capacity to make a decision, they are exposed to a life-threatening risk, someone else may be at risk of harm, or a criminal offence has been committed or is likely to be committed.

### Abuse and neglect

**Physical abuse:** A form of abuse which may involve hitting, shaking, throwing, poisoning, burning or scalding, drowning, suffocating or otherwise causing physical harm to a child or adult at risk. Physical harm may also be caused when a parent or carer fabricates the symptoms of, or deliberately induces illness.

**Sexual abuse:** Involves forcing or enticing a child or young person to take part in sexual activities, not necessarily involving a high level of violence, whether or not the child is aware of what is happening. The activities may involve physical contact, including assault by penetration (for example, rape or oral sex) or non-penetrative acts such as masturbation, kissing, rubbing and touching outside of clothing. They may also include non-contact activities, such as involving children in looking at, or in the production of, sexual images, watching sexual activities, encouraging children to behave in sexually inappropriate ways, or grooming a child in preparation for abuse (including via the internet). Sexual abuse is not solely perpetrated by adult males. Women can also commit acts of sexual abuse, as can other children.

**Emotional abuse:** The persistent emotional maltreatment of a child or adult at risk such as to cause severe and persistent adverse effects on their emotional development. It may involve conveying to a child/ adult at risk that they are worthless or unloved, inadequate, or valued only insofar as they meet the needs of another person; not giving them opportunities to express their views; deliberately silencing them or 'making fun' of what they say or how they communicate. It may feature age or developmentally inappropriate expectations being imposed, including interactions that are beyond a child or adult at risk's developmental capability, as well as overprotection and limitation of exploration and learning, or preventing them participating in normal social interaction. It may involve seeing or hearing the ill-treatment of another. It may involve serious bullying (including cyber bullying), causing a child or adult at risk to feel frightened or in danger, or the exploitation or corruption of children. Some level of emotional abuse is involved in all types of maltreatment of a child, though it may occur alone.

**Neglect:** The persistent failure to meet a child/ adult at risk's basic physical and/or psychological needs, likely to result in the serious impairment of their health or development. It may involve a parent or carer failing to:

- provide adequate food, clothing and shelter (including exclusion from home or abandonment);
- protect a child/ adult at risk from physical and emotional harm or danger;
- ensure adequate supervision (including the use of inadequate care-givers); or
- ensure access to appropriate medical care or treatment.

It may also include neglect of, or unresponsiveness to, a child's or adult at risk's basic emotional needs. Neglect may occur during pregnancy as a result of maternal substance abuse.





# SAFEGUARDING POLICY

## Additional examples of abuse and neglect of adults at risk

**Financial abuse:** having money or property stolen; being defrauded; being put under pressure in relation to money or other property; and having money or other property misused.

**Discriminatory abuse:** treating someone in a less favourable way and causing them harm, because of their age, gender, sexuality, gender identity, disability, socio-economic status, ethnic origin, religion and any other visible or non-visible difference.

**Domestic abuse:** includes physical, sexual, psychological or financial abuse by someone who is, or has been a partner or family member. Includes forced marriage, female genital mutilation and honour-based violence (an act of violence based on the belief that the person has brought shame on their family or culture). Domestic abuse does not necessarily involve physical contact or violence.

**Psychological abuse:** including emotional abuse, threats of harm or abandonment, deprivation of contact, humiliation, blaming, controlling, intimidation, coercion, harassment, verbal abuse, isolation or withdrawal from services or supportive networks.

**Organisational abuse:** where the needs of an individual are not met by an organisation due to a culture of poor practice or abusive behaviour within the organisation.

**Self-neglect:** behaviour which threatens an adult's personal health or safety (but not that of others). Includes an adult's decision to not provide themselves with adequate food, clothing, shelter, personal hygiene, or medication (when indicated), or take appropriate safety precautions.

**Modern slavery:** encompasses slavery, human trafficking, criminal and sexual exploitation, forced labour and domestic servitude. Traffickers and slave masters use whatever means they have at their disposal to coerce, deceive and force individuals into a life of abuse, servitude and inhumane treatment.

- A person who is being abused may experience more than one type of abuse
- Harassment, and bullying are also abusive and can be harmful
- Female Genital Mutilation (FGM) is now recognised as a form of physical, sexual and emotional abuse that is practised across the UK
- Child Sexual Exploitation is recognised as a form of sexual abuse in which children are sexually exploited for money, power or status
- Child trafficking is recognised as child abuse where children are often subject to multiple forms of exploitation. Children are recruited, moved or transported to, or within the UK, then exploited, forced to work or sold
- People from all cultures are subject to abuse. It cannot be condoned for religious or cultural reasons
- Abuse can have immediate and long-term impacts on someone's well-being, including anxiety, depression, substance misuse, eating disorders and self-destructive Conducts, offending and anti-social Conduct
- Those committing abuse are most often adults, both male and female. However, child-to-child abuse also takes place.



# SAFEGUARDING POLICY

## Appendix B:

### What to do if a disclosure from a child or adult at risk is made to you:

1. Reassure the child/adult that s/he is right to report the behaviour
2. Listen carefully and calmly to him/her
3. Keep questions to a minimum – and never ask leading questions
4. Do not promise secrecy. Inform him/her that you must report your conversation to the club Welfare Officer and/or the LTA Safeguarding Team (and the police in an emergency) because it is in his/her best interest – see appendix D for contact details
5. **REPORT IT!** If someone is in immediate danger call the police (999), otherwise talk to the club Welfare Officer and/or the LTA Safeguarding Team as soon as possible. Once reported, the LTA Safeguarding Team will work with you to ensure the safety and well-being of the child/ adult at risk
6. Do not permit personal doubt prevent you from reporting the concern/disclosure
7. Make an immediate objective written record of the conversation using the **Reporting a Concern Form**. Make certain you distinguish between what the person has actually said and the inferences you may have made. Your report should be sent to the club Welfare Officer and/or the LTA Safeguarding Team within 48 hours of the incident, who will store it safely.

See also the flowcharts at the start of this Policy and in Appendix C





# SAFEGUARDING POLICY

## Appendix C:

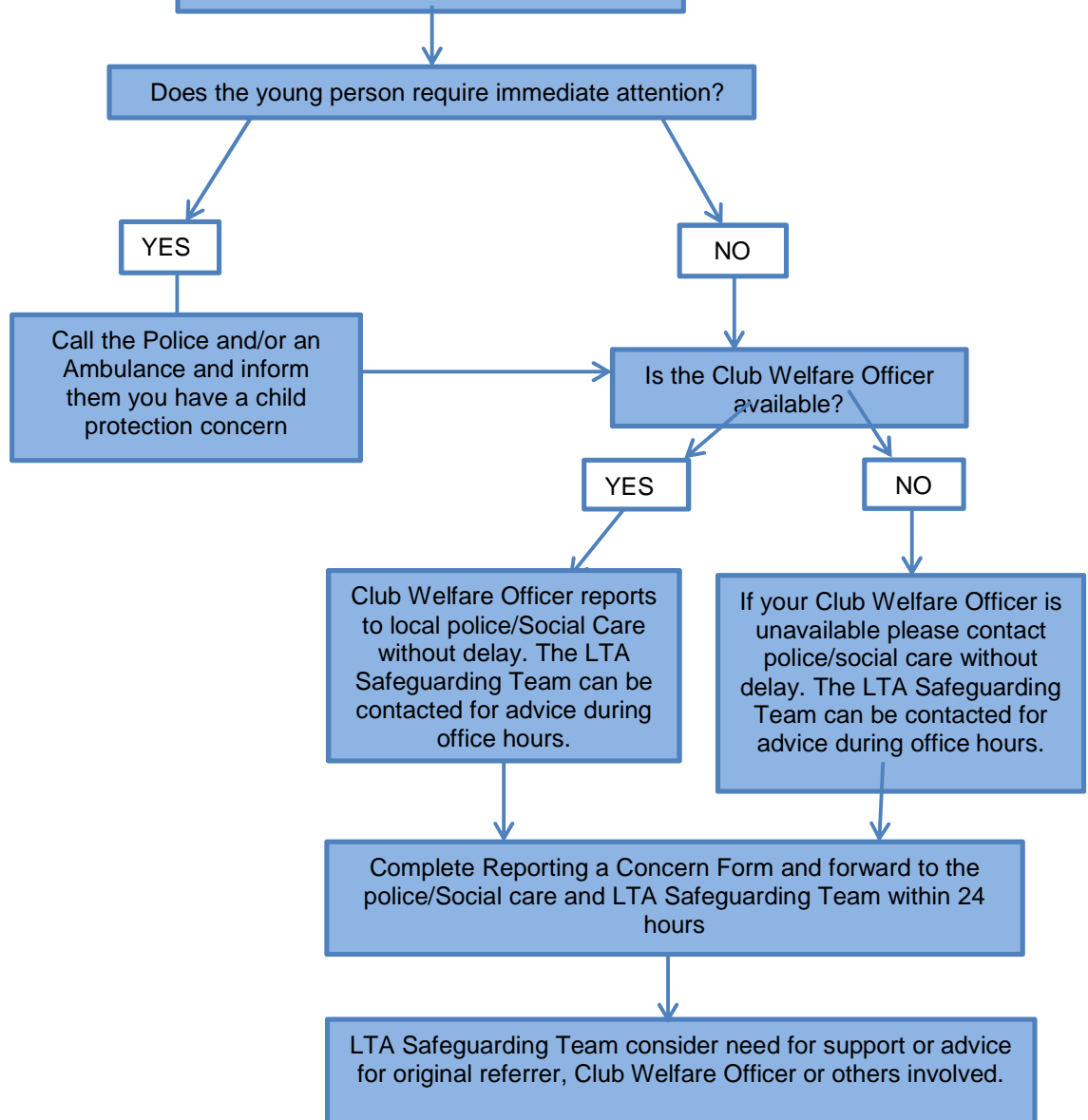
What to do if you are worried that a child is being abused outside the tennis environment (e.g. at home, school or in the community) but the concern is identified through the child's involvement in tennis

### Useful Contacts

LTA Safeguarding Team: 020 8487 7000  
Email: [safeguarding@lta.org.uk](mailto:safeguarding@lta.org.uk)  
NSPCC: 0808 800 5000  
Emergency Services: 999

Member of staff, coach or volunteer made aware of concerns about child's welfare or safety (e.g. suspicions of bullying at school, allegations of abuse within the family etc.) Make a note of anything the young person/witness has said, and what you have seen with dates and times

**Note: You should inform the parent/carer of the concern, unless you believe it would put the child/adult at risk, yourself or others at risk**





# SAFEGUARDING POLICY

## Appendix D: Contact Details

### Contact Details

#### LTA Safeguarding Team

020 8487 7000 / [safeguarding@lta.org.uk](mailto:safeguarding@lta.org.uk)

(Monday to Friday, 9am to 5pm)

#### LADO

Achieving for Children telephone 020 8547 5008 8am - 6pm Monday to Friday. Out of hours social worker 020 8770 5000.

Kingston Council Adult Services Access and Safeguarding Team during office hours on 020 8547 5005. After 5pm please call 020 8770 5000.

#### NSPCC

08088005000

#### Club Welfare Officer

Valerie Jermy ([welfare@coombewoodlta.co.uk](mailto:welfare@coombewoodlta.co.uk))